


Recycling

Items Accepted at Jefferson County Transfer Station

Items must be sorted according to categories below in your recycling bins

Plastic

- Bottles, Containers & Tubs with 1-7 
 - No Styrofoam (even with symbol)
 - No automotive oil containers
 - No plastic bags
 - Containers should be empty & rinsed



Glass

- Bottles & Jars (No need to separate by colors)
 - No windows, plate glass, mirrors, broken glass
 - No dishes and drinking glasses
 - No ceramic dishes, clay pots, etc
 - No light bulbs
 - Containers should be empty & rinsed



Metal

- Tin food cans
- Aluminum food & beverage cans
- Aluminum pans and foil
 - Containers should be empty and rinsed



Mixed Paper

- Office & copier paper
- Junk mail and envelopes
- Newspaper
- Magazines & catalogues
- Shredded paper
- Telephone books
- Paperback books—No hardcover books
- Paper grocery bags
 - No paper cups, plates, tissue & toilet paper
 - No hardcover books unless cover removed
 - No carbon paper



Paperboard (Lightweight Cardboard)

- Cereal
- Food Boxes
- Paperboard Egg Cartons



Cardboard

- Corrugated cardboard boxes
- Pizza boxes
 - No wax, plastic, styrofoam or metal coatings



The Items Below are Accepted for Recycling at the Transfer Station Only *Do Not Put These Items in Your Curbside Recycle Bins*

Single use (disposable) batteries

- Alkaline
- Lithium



Rechargeable Batteries

- Nickel-cadmium
- Lead Acid
- Lithium Ion
- Nickel Metal Hydride



Electronic Equipment

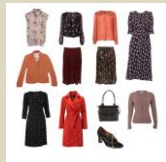
- TVs
- Computers
- Monitors
- VCRs
- DVRs
- Keyboards
- Mice
- Fax Machines
- Printers, Scanners
- Cable or Satellite Receivers
- Video Game Consoles



- No broken glass on TVs or monitors
- No dismantled electronics (must be a whole unit)

Textiles

- Clothing, Shoes, Sneakers, Belts, Purses, Linens, Pillow Cases, Blankets, Curtains and Stuffed Animals



White Goods (Appliances)



Scrap Metal

Tires (there is a fee for tires)