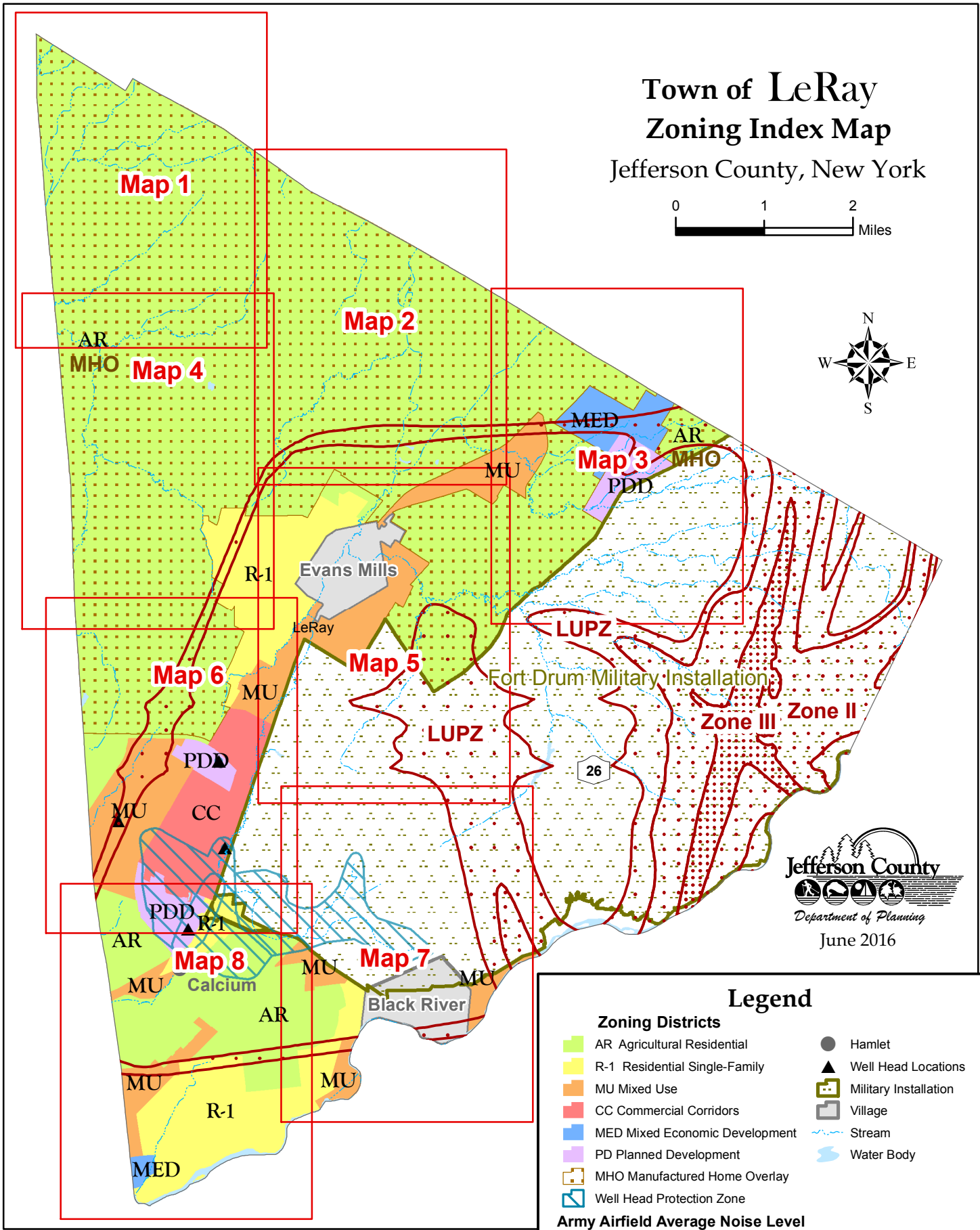
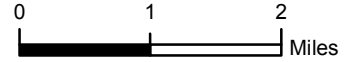


# Town of LeRay Zoning Index Map

Jefferson County, New York



Jefferson County  
Department of Planning  
June 2016

### Legend

AR Agricultural Residential	Hamlet
R-1 Residential Single-Family	Well Head Locations
MU Mixed Use	Military Installation
CC Commercial Corridors	Village
MED Mixed Economic Development	Stream
PD Planned Development	Water Body
MHO Manufactured Home Overlay	
Well Head Protection Zone	

### Army Airfield Average Noise Level

	LUPZ -- between 60 and 64 dB
	Zone II -- between 65 and 74 dB
	Zone III -- between 75 and 85 dB

Sources:  
Jefferson County Office of Real Property Tax Services,  
NYS Office of Cyber Security and Critical Infrastructure Coordination  
Town of LeRay, Bergmann Associates, Behan Planning and Design,  
Fort Drum Public Works, Fort Drum Regional Liaison Organization (FDRLO)